



MK7 Gravity Distributor



Overview

- Accurate and continuous slurry
- Cost effective
- Flow splitting for feed to:
 - Spiral Feed Banks
 - Table Circuits
 - Wet Screening Systems

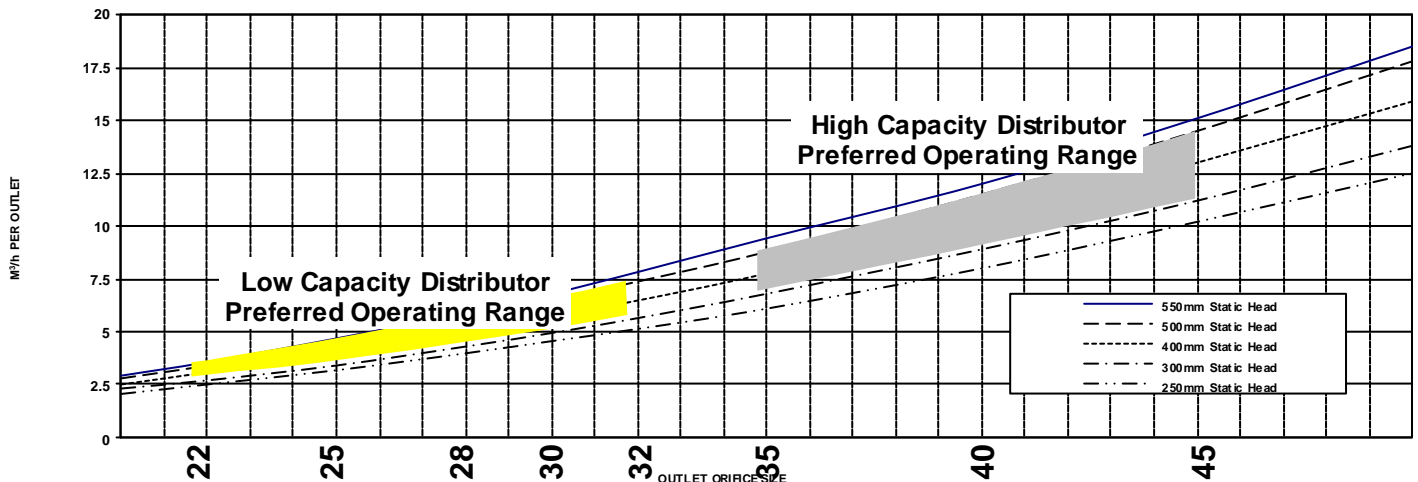
Mode of Operation:

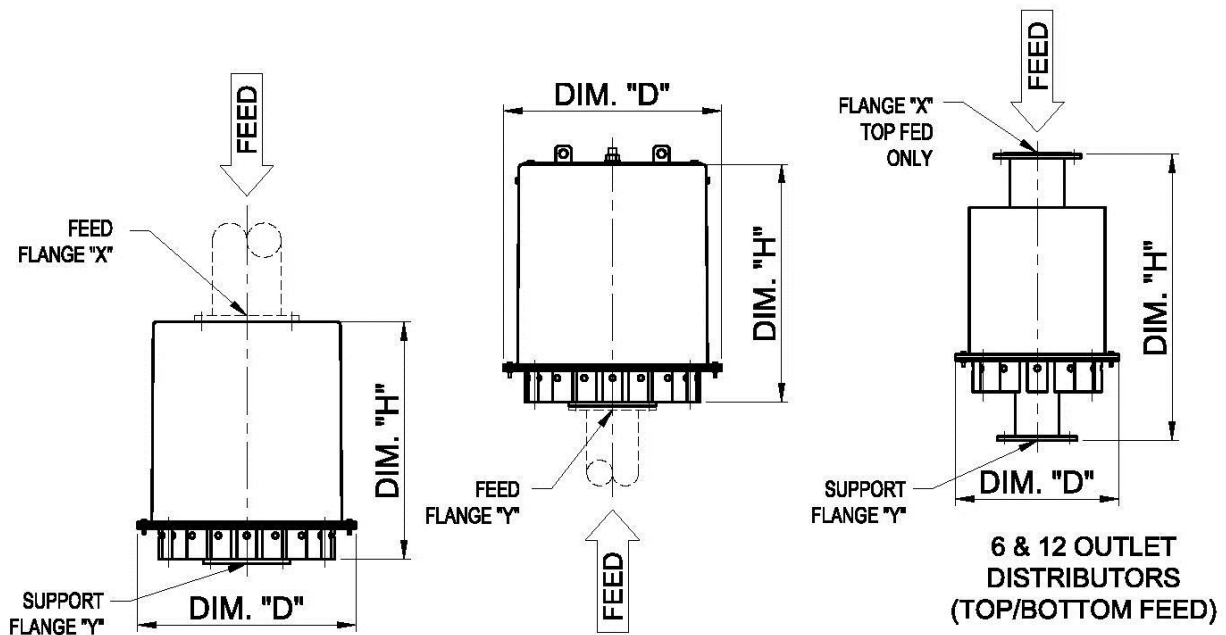
- The Mk7 can be constructed for top or bottom feed entry
- The top feed entry pipe is fitted with dispersion baffles to homogenise pulp and reduce entry velocity
- Feed pulp enters the vessel and impinges on a heavy cast polyurethane impact pad dissipating excess energy and imparting a radial turbulent flow
- Homogenised pulp passes through a stilling zone and exits via pre-calibrated metering nozzles into individual anti-syphon transfer pots connected to spiral feed pipework



Design Data

- The Mk7 has been exhaustively tested in the laboratory and in service
- The distributor will consistently and reliably operate with a coefficient of variation ("COV") of less than 5% and typically 3%





TYPICAL MK.7 DISTRIBUTORS											
LOW CAPACITY						HIGH CAPACITY					
O/L	BTM	TOP	"D"	"X"	"Y"	O/L	BTM	TOP	"D"	"X"	"Y"
6	-	950	350	100	100	6	-	950	350	150	100
6	750	-	350	-	100	6	750	-	350	-	100
12	-	950	430	150	125	12	-	982	576	200	125
12	750	-	430	-	125	12	800	-	576	-	125
18	-	780	700	200	150	18	-	807	855	250	200
18	780	-	700	-	150	18	816	-	855	-	200
24	-	780	855	200	150	24	-	807	1035	250	200
24	786	-	855	-	150	24	816	-	1035	-	200
33	-	780	1035	250	200	33	-	807	1140	250	250
33	786	-	1035	-	200	33	816	-	1140	-	250
36	-	780	1140	250	200	36	-	834	1300	250	250
36	786	-	1140	-	200	36	838	-	1300	-	250

LEGEND

O/L	Number of Outlets	"X"	Top Flange A.S.T.D.
BTM	Bottom Feed Dimension "H"	"Y"	Bottom Flange A.S.T.D.
TOP	Top Feed Dimension "H"	"D"	Diameter "D"