

MK9 Gravity Distributor



Overview

The new, cost effective, Mineral Technologies Mk9 Distributor combines performance with design simplicity and product quality.

Mineral Technologies' new, cost effective Mk9 slurry distributor maintains the Mineral Technologies standard for distributor performance achieving minimal levels of variation of both pulp density and volumetric flow.

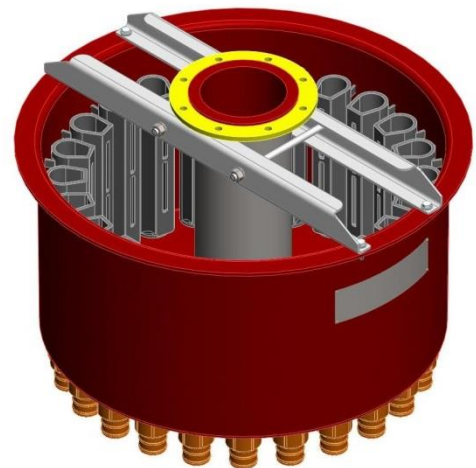
The newly designed riser tubes, with vertical slots, regulate the slurry flow to each spiral trough without the need for breathers or siphon breakers that are prone to clog with scale, slimes or salts. The vertical slots (12 or 20mm wide) help prevent weed and foreign matter from passing through to the spirals. The riser tubes are tapered at the bottom "throat" so they can be easily plugged to allow work on any spiral trough on the run.

The highly wear resistant, polyurethane riser tubes are precision cast resulting in identical dimensions for even distribution. The outlets can accommodate a substantial range of volumetric flow rate from 0 to (in excess of) 12 m³/hr.

The monolithic outer tank is robust and corrosion proof for a very long service life. It is highly wear resistant consisting of a layer of polyurethane covering the entire, inner surface of the structural, glass reinforced, plastic shell.

The Mk9 distributor is available as a top entry or bottom entry unit with 6 to 42 outlets. Individual outlets can be plugged permanently to feed fewer spirals without reducing the distribution performance. Both top and bottom entry models incorporate heavy polyurethane impact plates.

The stable and robust mounting can be adapted to any spiral frame.



Design Data

Outlets (number):
6, 12, 18, 24, 36 or 42

Outlet Type:
Vertical slot in riser tube

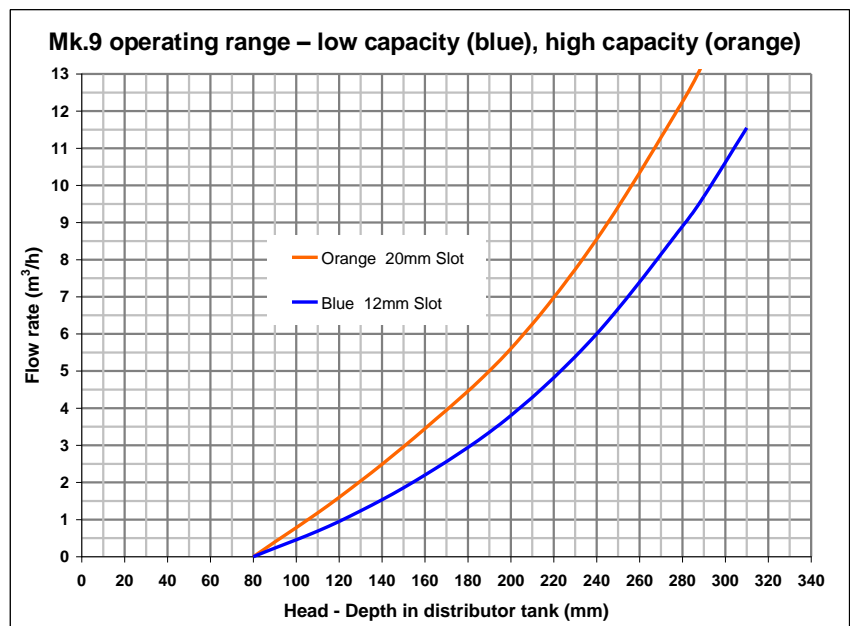
Tank Construction:
PU lined GRP shell

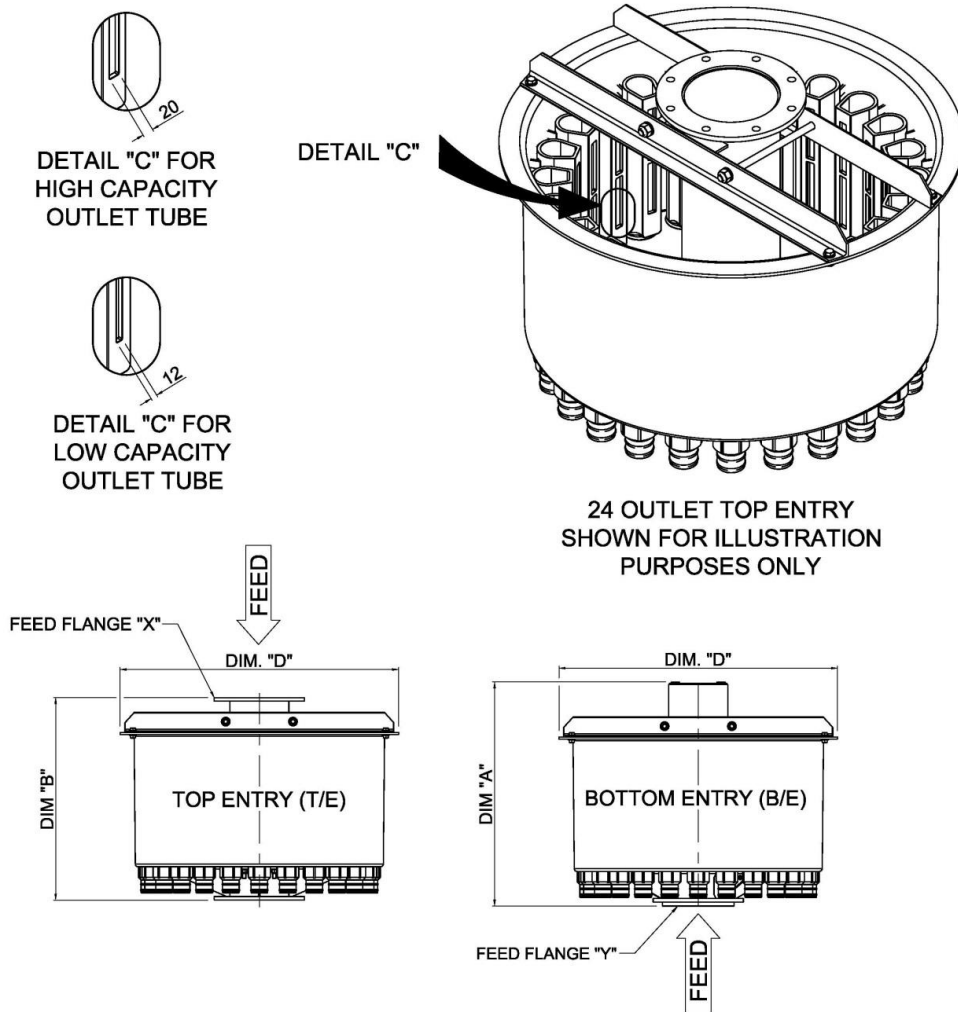
Riser Tube Construction:
2 piece, injection moulded PU
(injection moulded rubber available)

Volumetric Capacity:
0 to 12+ m³/h per outlet

Feed Arrangement:
Top Entry or Bottom Entry

(See general arrangement over page for more dimensional detail)





Typical Mk.9 Distributor Dimensions						
No. Outlets		"A"	"B"	"D"	"X"	"Y"
6 & 12	T/E	-	750	755	125	-
6 & 12	B/E	808	-	755	-	125
18	T/E	-	750	1035	150	-
18	B/E	808	-	1035	-	150
24	T/E/	-	750	1035	200	-
24	B/E	818	-	1035	-	200
36	T/E	-	750	1295	200	-
36	B/E	818	-	1295	-	200
42	T/E	-	817	1473	250	-
42	B/E		-	1473	-	200

Note:

Mineral Technologies reserves the right to alter specifications without prior notice.
For Certified Drawings suitable for Engineering Design purposes please refer to Mineral Technologies